



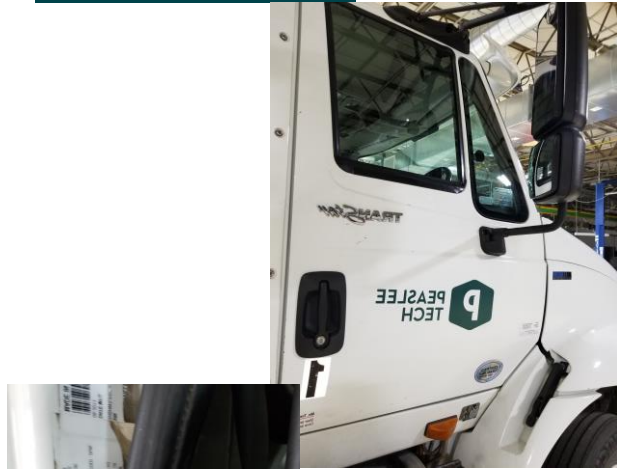
**PEASLEE
TECH**



Pre-Trip Inspection B

This inspection is from the front of the driver's door to the end of the tractor. Pointing at the items say these phrases

- THE MIRROR BRACKET IS SECURELY MOUNTED AND NOT BROKEN OR DAMAGED
- THE TURN SIGNAL MARKER LIGHT IS THE PROPER COLOR, YELLOW OR AMBER, AND NOT CRACKED, BROKEN, OR DIRTY
- THE DOOR OPENS AND CLOSES PROPERLY. THE HINGES ARE NOT BROKEN OR BENT. THE SEAL IS IN PLACE AND NOT DAMAGED
- THE FUEL TANK IS SECURELY MOUNTED, WITH RUBBER FUEL TANK STRAP LINER AND NOT LEAKING. THE CAP IS TIGHT, SEAL INTACT, AND THE CHAIN IS PRESENT





Pre-Trip Inspection B

This inspection is from the front of the driver's door to the end of the tractor. Pointing at the items say these phrases

- THE STEPS AND CATWALK ARE SECURELY MOUNTED, THERE IS NO MISSING HARDWARE AND NO EXCESSIVE DEBRIS
- THE FRAME IS NOT BENT OR TWISTED AND THERE ARE NO ILLEGAL WELDS
- THE DRIVE SHAFT IS NOT BENT OR CRACKED AND THE UNIVERSAL JOINTS ARE FREE OF FOREIGN OBJECTS
- THE EXHAUST IS SECURELY MOUNTED AND IS NOT MISSING ANY HARDWARE. THERE ARE NO SIGNS OF LEAKS, SUCH AS CARBON SOOT





Pre-Trip Inspection B

This inspection is from the front of the driver's door to the end of the tractor. Pointing at the items say these phrases

- THE FRONT AND REAR TORSION ARM MOUNTS ARE SECURELY MOUNTED TO THE FRAME AND NOT DAMAGED
- THE U-BOLTS ARE SECURELY MOUNTED AND NOT CRACKED OR BROKEN
- THE SHOCK ABSORBERS ARE SECURELY MOUNTED AND NOT LEAKING. THE RUBBER BUSHINGS ARE NOT WORN
- THE AIR BAGS ARE SECURELY MOUNTED AND NOT LEAKING. THERE ARE NO SPLITS OR CUTS AND THEY ARE NOT LEAKING





PEASLEE
TECH

Pre-Trip Inspection B

This inspection is from the front of the driver's door to the end of the tractor. Pointing at the items say these phrases

- THE AIR HOSE TO THE BRAKE CHAMBER IS SECURELY MOUNTED ON BOTH ENDS. THERE ARE NO SPLITS OR CUTS AND IT NOT LEAKING
- THE BRAKE CHAMBER IS SECURELY MOUNTED. IT IS NOT CRACKED OR BROKEN AND IT IS NOT LEAKING
- THE SLACK ADJUSTER HAS NO BROKEN PARTS AND IS NOT LOOSE. THE PUSH ROD IS AT A 90° ANGLE TO THE CHAMBER AND HAS NO MORE THAN 1" OF PLAY.
- THE BRAKE PAD IS SECURELY MOUNTED AND NOT BROKEN OR CRACKED. THE PAD MUST HAVE A MINIMUM OF ¼" DEPTH WITH NO SIGNS OF CRACKING OR GLAZING
- THE BRAKE DRUM IS SECURELY MOUNTED. IT IS NOT CRACKED OR BENT AND HAS NO BLUEING FROM EXCESSIVE HEAT





Pre-Trip Inspection B

This inspection is from the front of the driver's door to the end of the tractor. Pointing at the items say these phrases



- THE WHEEL IS NOT DAMAGED, CRACKED, OR BENT INSIDE OR OUTSIDE. THERE ARE NO WELDS
- CHECK FOR PROPER TIRE INFLATION WITH AN AIR GAUGE



- THE TIRE SIDEWALLS HAVE NO SPLITS OR CUTS AND THE TREAD IS EVENLY WORN
- THE TIRE TREAD DEPTH OF AT LEAST 2/32"





Pre-Trip Inspection B

This inspection is from the front of the driver's door to the end of the tractor. Pointing at the items say these phrases



- THE DUAL TIRES HAVE NO GAP BETWEEN THE WHEELS. THERE ARE NO FOREIGN OBJECTS BETWEEN THE TIRES



- THE VALVE STEM IS SECURELY MOUNTED, NOT DAMAGED AND HAS A METAL CAP
- THE LUG NUTS AT NOT CRACKED, BROKEN OR MISSING. THERE ARE NO RUST TRAILS OR SHINY THREADS FROM LOOSE LUG NUTS
- THE HUB SEAL IS NOT CRACKED, BROKEN, OR LEAKING. THE OIL LEVEL IS ADEQUATE





Pre-Trip Inspection B

This inspection is from the front of the driver's door to the end of the tractor. Pointing at the items say these phrases

- THE TAILLIGHTS ARE THE PROPER COLOR, RED, AND ARE NOT CRACKED, BROKEN, OR DIRTY
- THE DOT TAPE IS SECURELY MOUNTED, AND IS NOT DIRTY AND COVERS 100% OF THE REAR OF THE VEHICLE
- THE MUD FLAP SUPPORT IS SECURELY MOUNTED AND THE MUD FLAP IS NOT DAMAGED
- THERE IS ENOUGH SPACE BETWEEN THE REAR OF THE TRUCK AND THE LANDING GEAR FOR TURNS
- THE LICENSE PLATE BULB IS PROPERLY INSTALLED

